

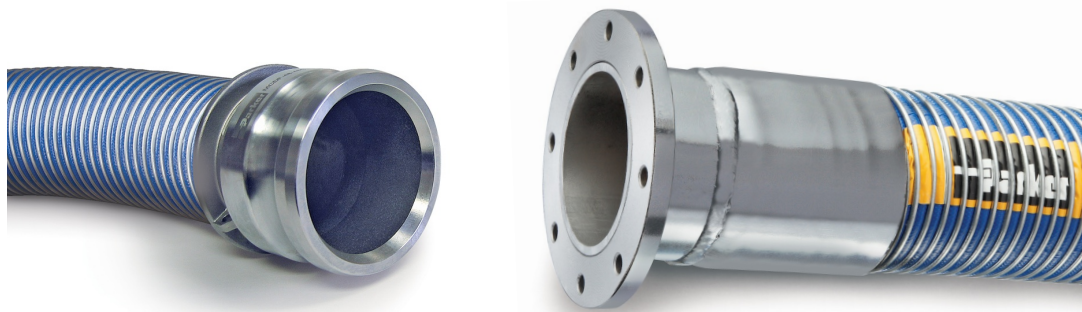


Parker Hannifin Corporation  
Industrial Hose Division  
17295 Foltz Industrial Pkwy  
Strongsville, OH 44149  
Telephone: (440) 268-2120  
Fax: (440) 268-2230  
www.safehose.com

## PRODUCT UPDATE

### Composite Hose Dry Seal Couplings

#### *New Configurations and End Styles*



Parker has added two configurations to the composite hose Dry Seal coupling offering. The new items—one-piece cam and groove and TTMA flange couplings—complement the traditional rigid male end style and are stocked, catalog products. The cam and groove couplings are available in Female (Type C) and Male (Type E) end styles, providing easy and quick connection/disconnection of hose lines. They are offered in lightweight aluminum, and corrosion resistant 316 stainless steel for aggressive chemical transfer applications. TTMA (Truck Trailer Manufacturers Association) carbon steel flange couplings are available for high-volume bulk transfer of petroleum products for loading/unloading applications. The one-piece design reduces the need for adapters and eliminates two potential leak points.

The addition of these new coupling configurations are examples of Parker's investment in the growth of the composite hose product line. Furthermore, Parker maintains a concurrent focus on quality: Parker carbon steel composite hose couplings are manufactured from Schedule 80 pipe, which provides double the strength and integrity versus couplings manufactured from Schedule 40 pipe commonly used by other manufacturers.

Bulk composite hose and couplings are available only to Parker Select Composite Assembly Fabricators. Distributor-fabricated Dry Seal hose assemblies are available in the most popular sizes (1" through 4" hose). Dry Seal technology provides clean and rapid assembly fabrication and installation by eliminating the use of epoxy and the subsequent curing/drying/set-up time.

*(Continued on page 2)*

PA 2012.05.009 Composite Hose Dry Seal Couplings



Parker Hannifin Corporation  
Industrial Hose Division

# Sales Advisory

Page 2

## Composite Hose Dry Seal Couplings *New Configurations and End Styles*

Part Number	Description	Material	Hose ID (in)	Approx Wt (lbs/ea)	Std Pack Qty (ea)	Stock Status **
FCDF-32-32D	Cam & Groove, Female Type C	Aluminum	2"	2.50	6	Y
FCDF-48-48D	Cam & Groove, Female Type C	Aluminum	3"	3.50	4	Y
FCDF-64-64D	Cam & Groove, Female Type C	Aluminum	4"	4.25	2	Y
MCDF-32-32D	Cam & Groove, Male Type E	Aluminum	2"	2.50	6	Y
MCDF-48-48D	Cam & Groove, Male Type E	Aluminum	3"	3.50	4	Y
MCDF-64-64D	Cam & Groove, Male Type E	Aluminum	4"	4.25	2	Y
FCDF-32-32C	Cam & Groove, Female Type C	316 Stainless Steel	2"	2.50	6	Y
FCDF-48-48C	Cam & Groove, Female Type C	316 Stainless Steel	3"	3.50	4	Y
FCDF-64-64C	Cam & Groove, Female Type C	316 Stainless Steel	4"	4.25	2	Y
MCDF-32-32C	Cam & Groove, Male Type E	316 Stainless Steel	2"	2.50	6	Y
MCDF-48-48C	Cam & Groove, Male Type E	316 Stainless Steel	3"	3.50	4	Y
MCDF-64-64C	Cam & Groove, Male Type E	316 Stainless Steel	4"	4.25	2	Y
01DFTTMA-64-64	TTMA Flange (6.63" flange OD)*	Carbon Steel	4"	8.00	2	Y

\* Fits through crimper head of COS-K4 crimper.

\*\* **Stock:** "Y" indicates stocked item; "N" indicates non-stocked item. Stock status subject to change. Contact Parker Customer Service.

If there are any questions please contact  
Parker Customer Service toll-free at:

866.810.HOSE (4673)  
Strongsville, OH  
Eastern USA

800.242.HOSE (4673)  
South Gate, CA  
Western USA